

# Annual Report

SERVING AMELIA, CHESTERFIELD, GOOCHLAND, HANOVER, HENRICO, NEW KENT, POWHATAN AND RICHMOND

## RED CROSS IN ACTION

### “....Someone Who Wants To Help You.”



*Warren Delaney has served on numerous national disasters such as being in New York following 9-11. More recently, he, along with volunteer, Tony Ciccone, drove the Chapter's mobile feeding unit to Louisiana to help Katrina victims.*

**B**e it helping local house fire victims, aiding Katrina victims in the Gulf Coast, transporting the ill to chemotherapy or talking with the media, Warren Delaney is a wonderful example of why the American Red Cross maintains the community's confidence.

Warren volunteers “For the sense of helping people in their times of need. If you put yourselves in the position of those who've lost everything, it's good to see someone who wants to help you.”

From floods in West Virginia and Florida, to New York City following 9-11, to hurricanes in North Carolina and Louisiana, Warren has supplied food for thousands of disaster victims. On a local level, he serves as a disaster volunteer, responding mostly to house fires. He also drives for the Red Cross supplying free transportation to life sustaining medical appointments.

“In volunteering for the Red Cross, you really get back a whole lot more than you give. Being in New York after 9-11 was more emotional than usual, but the sheer massive size of Katrina was more destructive and more people were affected,” says Warren. “And our economy is very much dependent on organizations that run volunteer services.”

*To volunteer for the American Red Cross, call 804-780-2250.*

### “She saved my life...”

—Sven Sjogren who was saved by Red Cross trained Martha Hodges

**O**n an overcast morning last May, Sven Sjogren visited Kanawha Recreation Association for a tennis match. His life would never be the same.

Sven, a tennis aficionado who appeared to be in excellent health, had been winning 5-2. While sitting on a bench chatting during a court change, in mid-conversation with no warning, he keeled over.

Red Cross trained instructor Martha Hodges happened to be near the courts. “I heard a thud, heard the bench skittering across the court. Guys were yelling, ‘He’s down.’ I responded immediately.”

“When Sven first went down he was still breathing,” she recounts. “Then he stopped. I rolled him on his back and started CPR. I was doing the third set when the fire department got there. At that point he had enough of a heartbeat not to need an AED.”

“Although I teach lifeguarding, I’d never had to perform CPR before. I’d always wondered if it would happen,” Hodges said. “When it did happen, I was running on adrenaline. I didn’t need to think. I just did it.”

As Sven ponders potentially grim alternative scenarios, he muses, “What if this had happened somewhere else? What would’ve happened if Martha had not been there to do CPR? She was very resolute. She saved my life.”

Sven, now nearly recovered from quadruple bypass surgery, looks forward to picking up his racquet again and playing tennis with his son.

Martha Hodges has been nominated for a national American Red Cross Certificate of Merit Award for saving Sven’s life.



*Another example of Red Cross training saving a life, Martha Hodges resuscitated Sven Sjogren when he collapsed with cardiac arrest on a tennis court. Martha has been a Greater Richmond Chapter instructor for over twenty years.*

#### American Red Cross Mission Statement

*The American Red Cross is a humanitarian organization, led by volunteers, that provides relief to victims of disaster and helps people prevent, prepare for and respond to emergencies. It does this through services that are consistent with the congressional charter and the fundamental principles of the International Red Cross and the Red Crescent Movement.*

*Inside: American Red Cross 2005 Annual Report and List of Donors*

YOUR GIFTS AT WORK



Dear Friends,

Now, more than ever before, the American Red Cross is needed. The past year brought record numbers of people through our doors seeking help. The tsunami, numerous hurricanes and the war in Iraq are but a few of the challenges that we faced. It is only through the donations of money and time from the American people that Red Cross help continues.

As you read through this annual report, we hope that you will feel a true sense of comfort, knowing that you have played a role in making so much help possible. We have made many changes in the way the Greater Richmond chapter operates, making it more efficient than ever. We take the ever increasing expectations of the community seriously as we do the manner in which we handle your monetary donations.

Thank you for being such a good friend to your local chapter. We very much appreciate your compassion and generosity. The American Red Cross belongs to you.

Sincerely,

*Kathleen B. Barrett*  
**Kathleen Burke Barrett, CEO**  
 Greater Richmond Chapter

*J. Theodore Linhart*  
**J. Theodore Linhart, Chair**  
 Board of Directors  
 Greater Richmond Chapter

**The Annual Report** is published by the American Red Cross, Greater Richmond Chapter. Comments are welcome. Contact the editor at (804) 780-2250. [www.greaterichmond.redcross.org](http://www.greaterichmond.redcross.org)

Chairman of the Board,  
**J. Theodore Linhart**

Chief Executive Officer,  
**Kathleen Burke Barrett**

Vice President, Public Relations,  
**William A. Harrison, Jr.**

Editor, **Margaret M. Webb**

Contributing Writers,  
**Amy Kaloski, Seth Shore**

Publications Committee  
**Roger Neathawk, Chair**  
**Nancy Burford**  
**Bill Farrar**  
**Randy Green**  
**Jennifer Scott**  
**Bob Spieldenner**

**Greater Richmond Chapter, American Red Cross  
 Statement of Financial Responsibility**

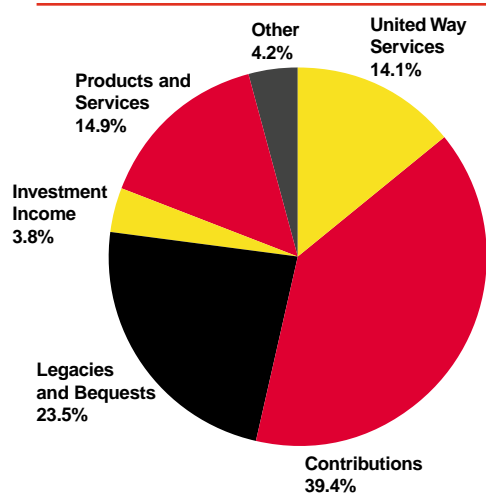
We are responsible for the accuracy and integrity of our audited Fiscal 2005 Financial Statements. These statements were prepared in accordance with Generally Accepted Accounting Principles using National American Red Cross conventions and guidelines. We have documented and implemented a system of internal controls to safeguard the Chapter's assets, ensure compliance with donor intent and promote good stewardship over the donated funds entrusted to the Chapter.

The condensed financial information contained in this report was extracted from the audited Financial Statements and Supplemental Schedules for the year ended June 30, 2005 prepared by Cherry Bekaert & Holland, LLP, the Chapter's independent Public Accountants. A copy of this report is available by written request directed to our Financial Development Office at Post Office Box 655, Richmond, Virginia 23218-0655.

Kathleen B. Barrett  
 Chief Executive Officer

C. Tom Lowrie  
 Chief Operating Officer

Richard Ciofani, CPA  
 Director - Finance and Accounting

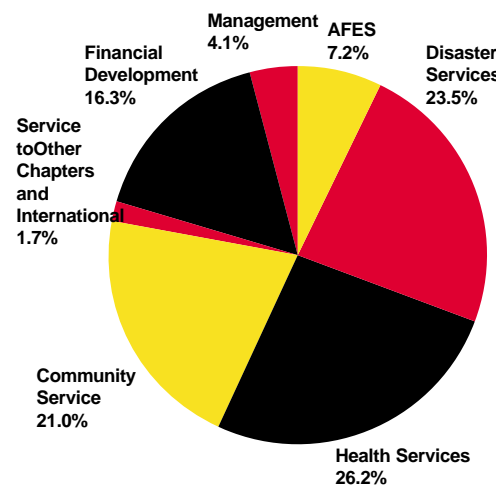


**Greater Richmond Chapter, American Red Cross  
 Condensed Financial Information  
 Fiscal year ended June 30, 2005 and 2004**

	JUNE 30, 2005	JUNE 30, 2004
<b>Expenses</b>		
Service to Other Chapters	\$ 20,000	\$ 79,000
Armed Forces Emergency Services	292,000	252,000
Disaster	952,000	941,000
Health Services	1,062,000	1,274,000
Community Service, including Transportation	852,000	807,000
International Services	48,000	43,000
Total Program Expenses	3,226,000	3,396,000
Financial Development	659,000	669,000
Management and general	164,000	121,000
Total Supporting services	823,000	790,000
<b>Total Expenses</b>	<b>\$4,049,000</b>	<b>\$4,186,000</b>

Excess of Revenues over Expenses	\$ 922,000	\$ 80,000
Transfer of net assets to another ARC unit	(33,000)	(9,000)
Change in Net Assets	\$889,000	\$71,000
Net Assets at beginning of year	5,299,000	5,228,000
<b>Net Assets at end of year</b>	<b>\$6,188,000</b>	<b>\$5,299,000</b>

Note 1: Legacies include a one-time \$760,000 bequest, which represents the largest such legacy received since the inception of the Chapter in 1917.



MAKING A DIFFERENCE

Red Cross Youth Leading the Way

The Red Cross Club at Chesterfield's Clover Hill High School is committed to global as well as local humanitarianism. Recognizing needs in Greater Richmond, these young leaders assisted in school blood drives. "A blood drive is something most everyone can participate in and it saves lives," said member Kate Gibbs. "After completing such a project, I feel good about myself and know that I did my best to help somebody in need. Who knows what changes in the future were made because I helped them out."

Remembering our troops, the Club coordinated a Beanie Baby drive for U.S. troops in Iraq. They sent cards and letters along with the tiny stuffed animals. During the holidays, Club members also made tray favors for veterans at Hunter Holmes McGuire Veterans Medical Center.

The tsunami disaster also motivated the club to raise money for Red Cross. To expand their awareness of other cultures, the Clover Hill High School club also began correspondence with a Red Cross Club in Japan.

Because of their outstanding work, the Clover Hill High School Red Cross Club has been nominated for the "Outstanding School Club Award."



WEB OF HOPE

This year, the Web of Hope, volunteers who knit and sew for people in need worldwide, sent gifts of warm clothing to twelve local agencies, six throughout the United States, and nine nations overseas. The Web shipped a total of 7,109 items this year.

A Sioux Indian child in South Dakota, pictured at left, smiles at receiving a handmade item from the Web of Hope. According to the Rev. Judy Bennett Spruhan, Episcopal priest at Rosebud Indian Reservation, "Through your kindness, hard work, hours of knitting, and tired fingers, you will touch and turn around the lives of countless infants and mothers."

Web volunteers have sent over 63,000 items to the people in need.



PROGRAMS AND PARTNERSHIPS

## Red Cross Rides to the Rescue...

**A** little over a year ago Marguerite Sheppard and Catherine Hansom had never met, but they had much in common. They were both facing twice weekly kidney dialysis treatments. And they both feared for their health. They also worried as to how they would be transported to the dialysis unit on Brook Road in Northside Richmond. Their family members worked and could not drive them and taxis are very expensive, but the Red Cross came to the rescue.

Now the two are good friends and enjoy each other's company on the Red Cross van, "Making the best of a tough situation." Both ladies live on Northside and are on the same van schedule, comparing notes on "aches and pains" as they ride to appointments.

"The Red Cross has been a big help to me, really great," said Mrs. Sheppard. "The drivers are always excellent and always on time." Mrs. Hansom agrees. "My granddaughter had been either bringing me or paying the expenses, so this is a big help to us both."

Last year the Chapter provided 8,818 free one way trips to life sustaining medical appointments. For more information about the program or to volunteer, call 780-2250.



## Keeping Military Families Together



*Carrie and Ben Conrad of New Salem, Pennsylvania have spent five weeks in Richmond for Ben's treatment of injuries sustained during the Iraq war. The Conrads are one of sixteen families who have benefited from the Chapter's program for severely injured.*

**W**ith wars in Iraq and Afghanistan, the Chapter's Armed Forces Emergency Services program has helped significantly more military members and their families. One example is the Conrad family. High school sweethearts, Carrie and Benjamin Conrad of New Salem, Pennsylvania were married January 8. On August 24, Ben was injured by a bomb blast while with his National Guard unit in Habaniyah, Iraq. "All I saw was red. I couldn't hear or think. For 30 seconds I felt dead."

The Conrad's are now Red Cross clients at the Hunter Holmes McGuire Veteran Affairs Medical Center's spinal cord unit. Sixteen families from around the country have accompanied their loved ones in treatment for severe spinal and brain injuries, most often related to combat in Iraq. The Chapter helps support the families' needs for temporary housing, transportation and food during this time of economic and emotional upheaval.

Ben's treatment includes intensive physical, speech, occupational and kinesi-  
 thetic therapies. The Conrad's are heartened by the progress Ben has made. "After two days here I began to walk on my own," he says, proudly. "And I've gained some of my memory back." Carrie is thankful to the Red Cross for enabling her to remain in Richmond where Ben needs her.

Like the many families in this program, the Conrad's future is uncertain, dependent on Ben's treatment and progress. They hope for a cranioplasty surgery in the near future to replace the missing third of Ben's skull and they plan to return to New Salem to rebuild their lives together.

## Partnering with Hispanic Communities to Save Lives

**I**n the wake of Gaston, which decimated many households in the Falling Creek area of Chesterfield County, St. Augustine Catholic Church members realized they could be integral in serving their community in the case of another disaster. Fifty percent of the Church's 1,900 families are Hispanic.

In the words of Fidel Rubio, the Church's Pastoral Associate for Hispanic Ministry: "We got involved with the Red Cross to help those most in need. We partnered with the Red Cross because it's an internationally recognized organization. We also recognize the effort that the Red Cross has made to provide training in Spanish for our growing, Hispanic community."

"Our Church members trained in shelter operations so that we would be prepared in case of an emergency and be able to act as a bridge between the Hispanic and Anglo communities," he added.

"We've already had opportunities to share the knowledge and skills gained through Red Cross training, motivating others to join us in preparing our community," Rubio continued. "Together we can make a difference, reaching out to help anyone who might need assistance, without regard to race, culture or religion."

Along with offering Red Cross First Aid and CPR classes for their congregation, St. Augustine has become certified as a Red Cross shelter.



*Members of St. Augustine Catholic Church in Chesterfield practice Red Cross shelter operation skills, loading supplies into the Chapter's emergency response vehicle. Fidel Rubio appears second to right.*

For more information about Red Cross training go to [www.greaterrichmond.redcross.org](http://www.greaterrichmond.redcross.org) or call 780-2250.

## TOGETHER We Prepare

# 5

ACTIONS FOR  
EMERGENCY  
PREPAREDNESS

**1**

**Make a Plan**

**2**

**Build a Kit**

**3**

**Get Trained**

**4**

**Volunteer**

**5**

**Give Blood**

For more information go to [www.greaterrichmond.redcross.org](http://www.greaterrichmond.redcross.org) or call 780-2250.

Greater Richmond Chapter

# FAST facts

2004 - 2005

Responded to 249 local emergencies, assisted 1,707 individuals and served 1,528 meals and snacks.

Transported clients on 8,818 free one way trips to life sustaining medical appointments.

Trained 36,420 individuals in First Aid, CPR, AED and other lifesaving skills.

Created and shipped 7,109 garments and blankets for the underserved through the Web of Hope, producing a total of 63,126 items since the program's inception 14 years ago.

Served the Greater Richmond community 24/7 through 2,823 volunteers, who gave their time and talent to Chapter programs.

Involved 420 youth members, ages eleven and above, in twelve Red Cross school clubs.

Reached approximately 3,300 individuals through four multicultural initiatives serving Hispanic, African American, Asian American and African communities.

Assisted in 1,090 emergency medical cases, served 557 new military recruits, 24 veterans and 16 military families through the Chapter's program at McGuire Veterans Affairs Medical Center. Conducted 143 pre-deployment briefing for military members and their families.

Concluded 29 international tracing cases.

Interpreted and translated in 44 instances through the Chapter's Language Bank.

Referred 2,311 individuals to sources of information and community services.

Prepared over 2,800 adults and 930 children with disaster training. Distributed disaster preparedness information to another 9,800 individuals.

Collected \$1,449,872 from the Greater Richmond community for American Red Cross tsunami relief.

## ENCOURAGING YOUR SUPPORT

### American Red Cross Funding

- 1. Why does the American Red Cross need to raise money from the public? Isn't the Red Cross a government agency?** The Red Cross is not a government agency—we are a private, not-for-profit organization. We are chartered by Congress to provide disaster relief services, but we count on the generosity of the American people to provide the vast majority of disaster relief money through charitable donations.
- 2. Where does the money go when I make a contribution to the American Red Cross to support disaster relief?** When you give to a national-scale or international-scale disaster (major hurricanes, tsunamis, floods, etc.) your money goes directly to the national American Red Cross relief effort - and 91% of your donation goes to help the disaster victims.
- 3. When I give to a national disaster relief effort, like Katrina, through my local Red Cross Chapter, am I automatically supporting local Red Cross services, too?** No, the local Red Cross Chapter does not withhold any portion of your disaster donation for local support. When you give to a national or international disaster through your local chapter, your donation goes directly to help the disaster relief effort you designated.

Please support local services. You can contribute to the Greater Richmond Chapter by mail, by phone, or online. Mail to P.O. Box 27006, Richmond, VA, 23261, or call (804) 780-2250, or make a secure donation online at [www.greaterrichmond.redcross.org](http://www.greaterrichmond.redcross.org).

### Red Cross Response to Hurricanes Katrina and Rita

- ◆ The cost of Red Cross relief efforts for Katrina and Rita will exceed **\$2 billion**.
- ◆ The Red Cross will distribute financial assistance to more than **3.7 million hurricane survivors**.
- ◆ The Red Cross has provided survivors with nearly **3.4 million overnight stays** in nearly 1,100 shelters.
- ◆ More than **210,000 Red Cross disaster relief workers** have responded to their neighbors in need.
- ◆ The Red Cross has served more than **25.8 million hot meals** and **22.9 million snacks** to hurricane survivors.
- ◆ The Greater Richmond community donated over **\$8,092,170** to the Hurricane Katrina relief effort.
- ◆ The Chapter has assisted **935 evacuees** in the wake of Hurricanes Katrina and Rita.
- ◆ **281** were children under age 18. **89** people were over age 65.
- ◆ **42 disaster services volunteers** and the mobile feeding unit from our Chapter have been deployed to the Gulf area to assist in hurricane relief efforts.



In partnership with the *Richmond Times Dispatch*, the Chapter received more than 3,000 letters from youth writing to console children affected by Hurricanes Katrina and Rita. This message reads: "We are sending are best! We are trying too do are best! from me"



**Helping Others**  
Saving Lives  
*front page*



**Web of Hope**  
Working Together  
*page 2*



**Partners**  
Hispanic Communities  
*page 7*

Special thanks to our generous supporters.



## Annual Report



**American Red Cross**

Greater Richmond Chapter  
P.O. Box 655  
Richmond, Virginia 23218-0655

Non-Profit  
U.S. POSTAGE  
**PAID**  
Permit No. 1302  
Richmond, VA



## JULY 1, 2004 - JUNE 30, 2005 DONORS

**INDIVIDUAL ANNUAL FUND DONORS****\$10,000+**

Mr. and Mrs. Julian P. Garber  
Mr. and Mrs. J. Theodore Linhart  
Mr. and Mrs. James E. Ukrop

**\$7,500 +**

Anonymous  
Mr. and Mrs. Elliott M. Harrigan  
Ms. Sheryl Robins and Mr. Darren Nolt

**\$5,000 +**

Anonymous  
Mr. and Mrs. William C. Boinest  
Mr. and Mrs. John H. McDowell  
Mr. and Mrs. Randolph N. Reynolds  
Ms. Judith L. Stull  
Mr. and Mrs. J. Edward Ukrop

**\$2,500 +**

Ms. Nancy G. Baker  
Mr. and Mrs. Dale P. Bateman  
Mr. and Mrs. J. Stewart Bryan, III  
Mr. Robert B. Livy  
Mrs. Maude L. Mann  
Mr. and Mrs. A. A. Pruitt  
Mrs. Georgina M. Rawles  
Mr. and Mrs. William M. Richardson  
Mr. and Mrs. Gene A. Rose  
Mr. and Mrs. Robert S. Rosenbaum  
Mr. and Mrs. W. C. Schmied  
Dr. Robert P. Singer  
Mrs. Alma Sitterding  
Mr. and Mrs. R. C. Williamson

**\$1,000.00 +**

Anonymous (3)  
Mr. Horace D. Adamson  
Ms. Kathleen Burke Barrett  
Mr. and Mrs. Thomas K. Bednarz  
Mr. and Mrs. Peter J. Bernard  
Dr. Virgie M. Binford  
Mr. Marvin C. Bowling, Jr.  
Mr. J. Michael Boyle  
Mr. and Mrs. Rudolph H. Bunzl  
Mr. and Mrs. James E. Cain  
Mr. and Mrs. Ramon E. Chalkley, Jr.  
Cynthia M. Charity, M.D.  
Mr. and Mrs. Wayne A. Chasen  
Mr. Thomas P. Christino  
Mr. and Mrs. William F. Claud  
Dr. and Mrs. Charles H. Cockrell  
Mr. and Mrs. Louis C. Collier  
Mr. and Mrs. Robert E. Comet  
Mr. and Mrs. Keith J. Copi  
Ms. Mari-Lee Corwin  
Mr. James H. Cottrell, Jr. and  
Ms. Melissa R. Phillips  
Mr. Neal L. Craig  
Mr. and Mrs. Steven W. Cross  
Mr. and Mrs. Overton D. Dennis, Jr.  
Mr. and Mrs. Rob Dolan  
Mr. Donald P. Falls  
Dr. and Mrs. William F. Falls, Jr.  
Mr. and Mrs. Thomas F. Farrell  
Mr. Jeffrey M. Feix  
Mr. Ernest L. Fox, III  
Dr. Isadore H. Friedberg  
Mr. and Mrs. Stevens N. Gentil  
Mr. and Mrs. Donald L. Golden  
Ms. Katharine T. Gray  
Mr. George O. Gregory  
Ms. Olive H. Griffin  
Mr. Charles B. Harmon  
Mr. and Mrs. William E. Hawkins  
Mr. and Mrs. Gordon W. Hays  
Ms. Penelope B. Holladay  
Mr. John E. Holleran  
Mr. and Mrs. William H. Holliday  
Mr. and Mrs. Lowrey H. Holthaus  
Mr. and Mrs. William H. Jones, Jr.  
Mr. and Mrs. J. Michael Kelleher  
Mr. D. G. Lavecchia  
Dr. and Mrs. Jeffrey Levin  
Mr. and Mrs. Jerry A. Ligon  
Mr. and Mrs. William J. Longan, Jr.  
Mr. and Mrs. Charles S. Luck, III  
Mr. William Marshall  
Mrs. Ola B. McDougall  
Mr. Jeffrey R. Michel  
Mr. and Mrs. Usten C. Micklem  
Mr. and Mrs. Thomas M. Millhiser  
Mr. and Mrs. Kenneth E. Mills  
Mr. and Mrs. Alfred F. Mistr, Jr.  
Mr. and Mrs. James A. Mohs  
Mr. Richard D. Mustain  
Mr. Lewis H. Myers  
Mr. and Mrs. G. A. Nea, Jr.  
Mr. and Mrs. Craig Noble  
Ms. Jeanne E. O'Grady  
Dr. and Mrs. Thomas S. Osdene  
Ms. Kamini Pahuja  
Mr. Edward H. Phillips  
Mr. and Mrs. Thomas E. Phipps  
Mrs. Iva R. Purdy  
Ms. Mary Ann C. Ramage  
Ms. M. Leigh Rooke  
Mr. Richard R. Russell  
Mr. and Mrs. James D. Snowa, Sr.  
Mr. Charles A. Stillman  
Mr. William C. Taylor  
Mr. and Mrs. John B. Thompson  
Mr. Ronnie R. Thornton  
Ms. Evelyn S. Traub  
Mr. Michael T. Trenkle  
Ms. Katherine B. Tyler  
Mr. and Mrs. David P. Wade  
Mr. and Mrs. Hays T. Watkins  
Mr. and Mrs. Timothy W. Watson  
Mr. and Mrs. Daniel R. Wilkinson, Jr.  
Ms. Jean P. Wilson  
Mr. and Mrs. Richard W. Wiltshire  
Mr. and Mrs. Daniel Winfield  
Mr. and Mrs. Edward H. Winks, Jr.  
Mr. and Mrs. J. K. Wood  
Mr. and Mrs. Charles S. Ylonen  
Mr. and Mrs. A. F. Young, Jr.  
Dr. and Mrs. James J. Zelenak

**\$500 +**

Mr. and Mrs. Thomas B. Ahl  
Mr. Alexander Alexander  
Mr. and Mrs. Charles E. Allen, Jr.  
Mr. and Mrs. Ralph Antell  
Ms. Charlotte G. Anthony  
Mr. Ben S. Arthur  
Dr. Carl O. Atkins, Jr.  
Dr. Ann G. Auletta  
Ms. Margaret A. Barber  
Ms. Eunice B. Barnes  
Mrs. Frances N. Barnes  
Mr. Richard T. Barnes  
Mr. and Mrs. Michael F. Barry  
Mr. Craig Baughan  
Dr. and Mrs. William R. Beach  
Mr. and Mrs. Richard L. Beadles  
Mr. Frank C. Bedell  
Ms. Nancy S. Benson  
Mr. and Mrs. Harold W. Bohannon  
Mr. J. E. Bolling, C.P.A.  
Mr. Clarence L. Bourne  
Ms. Carla Bowman  
Mr. Robert A. Brandau  
Mrs. Bliss S. Brown  
Mr. and Mrs. David Brown  
Mr. and Mrs. William J. Bugg, Jr.  
Mrs. Virginia A. Call  
Ms. Martha M. Campbell  
Mr. and Mrs. Parvin L. Cantrell  
Mrs. Elizabeth P. Christian  
Mr. and Mrs. Jon M. Clarke  
Mr. and Mrs. J. Robert Cross  
Mr. and Mrs. W. Scott Cunningham  
Mr. and Mrs. C. F. Danforth  
Mr. and Mrs. David K. Daniels  
Dr. and Mrs. James R. Darden, Jr.  
Mr. and Mrs. Russell R. Davis  
Ms. Catherine Delesdernier  
Mr. and Mrs. Charles M. Dietz  
Dr. and Mrs. Richard W. Dodd  
Mr. and Mrs. H. C. Du  
Mr. and Mrs. Jack A. Duncan  
Mr. and Mrs. E. L. Dunford  
Mr. and Mrs. James A. Duval  
Mr. Robert I. Duval  
Mr. and Mrs. John Edwards  
Mr. and Mrs. S. James Ellen  
Mr. and Mrs. John E. Epperly  
Mrs. Beatrice W. Evans  
Colonel and Mrs. David M. Fleming, II  
Mrs. Viki Frankenburger  
Mr. and Mrs. Donald Franklin  
Mr. and Mrs. William W. Franklin  
Ms. Ione F. Gee  
Mr. and Mrs. C. Stephenson Gillispie, Jr.  
Mr. and Mrs. Robert J. Goebel  
Mr. and Mrs. John J. Gravins, III  
Mr. James H. Gray  
Mr. and Mrs. Daniel Guertler  
The Honorable and Mrs. John H. Hager  
Mr. and Mrs. Charles F. Hall  
Mr. and Mrs. Donald L. Hall  
Ms. Sharon L. Hall  
Mr. and Mrs. Robert L. Halsey  
Mr. and Mrs. William M. Harlow  
Mr. William A. Harrison, Jr.  
Ms. Lucy M. Harvie  
Mr. and Mrs. Howard O. Haverty, Jr.  
Mr. and Mrs. Curtis E. Haw, Jr.  
Mr. Arthur D. Henderson  
Mr. Henry Hewitt  
Mr. and Mrs. C. Lee Hilbert  
Mrs. Elizabeth B. Hill  
Ms. Deborah L. Howard  
Mrs. Dorothea M. Howard

Mr. and Mrs. Gregor O. Huber  
Mr. and Mrs. W. Thomas Hudson  
Mr. S. Anderson Hughes  
Mr. D. Ronald Inlow  
Mr. and Mrs. Lloyd F. Jackson, Jr.  
Mr. and Mrs. Jerome Jaeger  
Mr. and Mrs. William R. Jeter  
Mr. and Mrs. Bill D. Johnson  
Dr. and Mrs. Beverly Jones  
Mr. Charles D. Jurgens  
Mr. and Mrs. David R. Kangas  
Mrs. Paul and Lisa Kaplowitz  
Mr. and Mrs. Jarvis A. Keel, Jr.  
Mr. and Mrs. Martin P. Kelly  
Mr. and Mrs. Curtis C. Kimbrell  
Mr. James W. Klaus  
Mr. and Mrs. William H. Knull  
Mr. and Mrs. Frederick G. Kraegel  
Ms. Brenda Lafrandre  
Mrs. Virginia G. Lancaster  
Ms. Audrey J. Lankford  
Mr. and Mrs. Harry G. Lee  
Mr. and Mrs. David R. Leshner  
Mr. and Mrs. Robert J. Lipper  
Mr. and Mrs. H. Jack Lissenden  
Mr. and Mrs. Robert D. Lockard  
Mr. and Mrs. William G. Longest, Jr.  
Dr. and Mrs. David W. MacMillan  
Mr. and Mrs. J. Edward McBride  
Mr. and Mrs. Eugene W. McCaul  
Mr. and Mrs. Robert J. McCormack  
Dr. and Mrs. Fred J. McGlynn  
Mr. and Mrs. S. L. McLaughlin  
Mr. and Mrs. Edwin B. Meade, Jr.  
Dr. and Mrs. John F. Meyers  
Mrs. Elizabeth B. Miley  
Mr. and Mrs. Jeffrey W. Miller  
Mr. and Mrs. R. B. Mitchell  
Mr. and Mrs. R. Glen Morgan  
Dr. and Mrs. Hadis Morkoc  
Mr. and Mrs. Tarzan Moss  
Ms. Edna H. Musser  
Mr. James P. Neifeld  
Mr. and Mrs. William W. Nelson  
Dr. and Mrs. L. Terry Oggel  
Ms. Catherine M. Outland  
Mr. Michael A. Paccione  
Ms. Kamini Pahuja  
Mr. and Mrs. Michael A. Perry  
Ms. Kathleen W. Pevsner  
Mr. and Mrs. John S. Pierce, Jr.  
Mr. Robert Pratt  
Mr. Salvatore Prisco  
Mr. and Mrs. G. W. Proffitt  
Mr. Joseph C. Ramage  
Col. and Mrs. Donald A. Ramsay  
Mr. Malcolm M. Randolph  
Ms. Margaret M. Randolph  
Mr. and Mrs. Thomas S. Reams  
Captain F. F. Reck  
Mr. and Mrs. Walter W. Regirer  
Mr. Edmund A. Rennolds, Jr.  
Ms. Nancy C. Reveley  
Mr. Richard W. Rew, Jr.  
Mr. David P. Reynolds  
Mrs. Doris H. Richards  
Dr. James L. Riley  
Mr. and Mrs. O. Randolph Rollins  
Reverend Dr. and Mrs. Ben L. Rose  
Mr. Mark E. Rubin  
Mr. and Mrs. Jeffrey A. Rust  
Mr. and Mrs. Robert F. Salsitz  
Ms. Cecile H. Saunders  
Mr. and Mrs. William U. Savage  
Mr. and Mrs. Thomas W. Schleicher  
Ms. Brenda J. Seabron  
Mr. and Mrs. Ranjit K. Sen  
Dr. and Mrs. Chester H. Sharps  
Mrs. Ethel V. Shellenberg  
Mr. and Mrs. John R. Sherman, Jr.  
Dr. and Mrs. J. Michael Simpson  
Mrs. Barbara B. Sims  
Mr. Robert C. Sledd  
Dr. Lori V. Smithson  
Mr. and Mrs. John P. Smoots  
Mr. and Mrs. R. W. Speight  
Mr. and Mrs. W. L. Stagg, III  
Mr. and Mrs. Harold F. Stauffer  
Mr. Richard H. Steiner  
Mr. J. M. Stertz  
Mr. and Mrs. Joseph C. Stiles, Jr.  
Mr. and Mrs. Douglas L. Stone  
Ms. Susanne S. Stone  
Mrs. J. Randall Street  
Mr. and Mrs. Steven P. Sullivan  
Mr. and Mrs. Richard L. Thalheimer  
Mr. and Mrs. John E. Thaxton, Jr.  
Mr. Thomas D. Thayer  
Mrs. Elizabeth H. Thomas  
Mrs. Rogers T. Thorp  
Mr. J. Kenneth Timmons

Mrs. Celia A. Titmus  
Harry and Sandra Titus  
Mr. and Mrs. James E. Trice  
Mrs. Frances B. Valentine  
Mr. and Mrs. Edward Villanueva  
Ms. Esther F. Walden  
Mr. and Mrs. Charles B. Walker  
Mr. and Mrs. Daniel B. Walker  
Ms. Mary T. Waller  
Mr. and Mrs. James H. Walsh  
Ms. Susan J. Way  
Ms. Mary S. Weaver  
Mrs. Lynn P. Webster  
Ms. Christine G. Welch  
Mr. James H. Westerman  
Mr. Douglas D. Wetmore, III  
Mrs. Wiley Wheat  
Mr. and Mrs. Richard T. Wheeler, Jr.  
Ms. Letitia N. Wilkinson  
Mrs. Alta M. Williams  
Mr. and Mrs. Reginald R. Winstead  
Mr. William C. Wirth  
Mr. and Mrs. Joseph E. Wright, Jr.  
Ms. Dorothy C. Young

**\$250 +**

Anonymous  
Mr. and Mrs. William I. Agee  
Mr. and Mrs. William C. Ager  
Mr. Werner R. Altenkirch  
Mr. and Mrs. Joseph Amado  
Dr. and Mrs. James F. Anderson  
Ms. Sandra S. Apple  
Ms. Molly E. Archibeque  
Mr. Warren H. Arrington  
Ms. Ruth Avellar  
Ms. Patricia L. Ayers  
Mr. S. Russell Bailey, Jr.  
Mr. and Mrs. Adelbert W. Baker  
Mrs. E. Ballard Baker  
Dr. and Mrs. Michael Ball  
Mrs. Elizabeth Bawtinheimer  
Mr. Tom C. Bayly  
Mr. Hunter W. Beadles, Jr.  
Ms. Mary A. Beck  
Mr. and Mrs. Stewart W. Bell  
Mr. Stephen J. Binns  
Mrs. Ruth C. Blevins  
Ms. Mozelle Booker  
Mr. Timothy F. Boomer  
Mr. George T. Botens  
Mr. and Mrs. William E. Bovender  
Mr. and Mrs. James N. Boyd  
Dr. and Mrs. Milton A. Boyd  
Mr. and Mrs. J. Wesley Boykin  
Mrs. Lois L. Bradley  
Mr. and Mrs. Daniel L. Bratcher  
Colonel Bruce E. Brennan  
Mr. Edward Brett  
Mr. and Mrs. Arthur Brinkley, III  
Mrs. Lillian H. Britton  
Mr. and Mrs. Clement J. Brock  
Mr. and Mrs. B. W. Brockenbrough, Jr.  
Mr. and Mrs. John A. Brook, Jr.  
Ms. Mary J. Brooks  
Mr. and Mrs. Paul K. Brown  
Ms. Mary F. Bruce  
Mr. and Mrs. Hans Brueggemann  
Mr. and Mrs. Warner F. Brundage, Jr.  
Mr. and Mrs. George L. Bryant, III  
Mrs. Helen C. Bryce  
Mr. and Mrs. Robert Buckman  
Mrs. Roy E. Burgess, II  
Mrs. Ann D. Burke  
Mr. Nelson K. Burks  
Mr. J. C. Burton, Jr.  
Dr. Melvin C. Burton, Jr.  
Mr. and Mrs. James C. Butler  
Mrs. Royal E. Cabell, Jr.  
Mr. and Mrs. Albert D. Cales, Jr.  
Mr. Brian Cann  
Colonel Eddie M. W. Cargill  
Mr. Bruce A. Carlton  
Ms. V. Claire Carlton  
Mrs. Eugenia H. Carpenter  
Mr. Mark T. Carroll  
Mr. and Mrs. Thomas N. Chewning  
Ms. Michelle M. Chimento  
Ms. Alyce Chittum  
Mr. Dixon W. Christian  
Mr. and Mrs. Richard Ciofani  
Mr. and Mrs. Charles E. Clark, Jr.  
Mr. and Mrs. Frederick A. Clark, Jr.  
Mrs. Helen T. Cobb  
Ms. D. S. Coker  
Mr. James E. Cole  
Mrs. Kathleen Y. Cook  
Ms. Verna D. Cook  
Mr. and Mrs. A. R. Coram  
Captain and Mrs. R. P. Cordray  
Mr. William B. Correll, Jr.  
Mr. Garland R. Cothran

## JULY 1, 2004 - JUNE 30, 2005 DONORS

Mr. and Mrs. Craig G. Covey  
 Ms. Pauline E. Craft  
 Mr. and Mrs. Barry Crawford  
 Mr. and Mrs. Vaughan Crawley  
 Ms. Susan Cullen  
 Mr. and Mrs. M. P. Cummings, Jr.  
 Mr. W. Carter Dages, Jr.  
 Mr. and Mrs. Robert R. Daugherty  
 Mr. and Mrs. Robert C. Dawson  
 Mr. Gregory C. Dayne  
 Mr. and Mrs. Rutger de Quay  
 Mr. and Mrs. G. W. Dehoff  
 Mr. and Mrs. E. Warren Delaney  
 Mr. Perrin T. Desportes, Jr.  
 Mr. John D. Detlefsen  
 Mr. and Mrs. W. B. Dickler  
 Ms. Beverly Dillard  
 Mrs. Dorothy H. Dillard  
 Mr. and Mrs. Charles T. Draper  
 Mr. Harley W. Duane, III  
 Mr. and Mrs. Elmer K. Dunn  
 Miss Jane Dunn  
 Dr. Donald L. Duvall  
 Ms. Deborah A. Dzendzel  
 Ms. Elizabeth E. Eanes  
 Mr. Gregory Edwards  
 Mr. and Mrs. J. M. Eggleston, Jr.  
 Mr. Robert E. Eicher  
 Mr. and Mrs. William D. Ellen  
 Mr. and Mrs. William C. Ellen  
 Mr. and Mrs. Randall L. Elliott  
 Ms. Marian E. English  
 Mr. and Mrs. Stephen E. Estabrook  
 Mr. and Mrs. Dennis D. Etheredge  
 Mr. and Mrs. Timothy S. Feehan  
 Mrs. Margaret A. Ferguson  
 Mr. and Mrs. Donald M. Ferrusson  
 Mr. and Mrs. William Ferrar  
 Dr. and Mrs. Paul B. Ferrara  
 Mr. and Mrs. Carl D. Fisher  
 Mr. and Mrs. Clifford B. Fleet, III  
 Mr. and Mrs. Marvin V. Fletcher, Jr.  
 Ms. Barbara S. Foran  
 Ms. Bonnie M. France  
 Mr. and Mrs. Wilbur R. Franklin  
 Col. John C. Fullerton, Jr.  
 Major and Mrs. Cicero Gainer  
 Dr. and Mrs. Connolly C. Gamble  
 Mr. and Mrs. Marvin W. Garrett  
 Mr. William Garrett  
 Mr. Ilias C. Georgakopoulos  
 Mr. and Mrs. David L. Gilliam  
 Mrs. Janet D. Gilliam  
 Mr. Terry E. Glass  
 Mr. and Mrs. Britton L. Glisson  
 Ms. Lillian G. Gold  
 Mr. and Mrs. C. S. Goodloe  
 Mr. and Mrs. Jeffrey B. Gould  
 Mr. Percy L. Granger  
 Dr. and Mrs. John I. Gray, Jr.  
 Dr. Kevin J. Green  
 Mrs. Rosa W. Green  
 Mr. and Mrs. Stuart M. Greenwood  
 Mr. Stanford L. Greer, Jr.  
 Mr. and Mrs. K. S. Gregory  
 Mr. and Mrs. Robert L. Gregory  
 Mr. Thomas C. Guirkin  
 Ms. Ann I. Gurkin  
 Mr. and Mrs. Jerry K. Hancock  
 Mr. Charles F. Hardy  
 Mr. and Mrs. Edward I. Hardy, Jr.  
 Mr. and Mrs. Robert M. Harmon  
 Mr. and Mrs. Ratcliffe W. Harris  
 Mr. Michael Hartenberg  
 Mr. and Mrs. Melvin C. Hawkins  
 Miss Marian F. Haynes  
 Mr. and Mrs. James Haynesworth  
 Ms. Edythe A. Head  
 Mr. and Mrs. Michael R. Heatley  
 Mr. and Mrs. Arthur W. Helwig  
 Ms. Joyce Herrington  
 Mr. and Mrs. Lee J. Hesler  
 Ms. Jeanette Hickle  
 Mr. and Mrs. Hunter R. Hill  
 Ms. Karen D. Hill  
 Mr. and Mrs. Lucian W. Hiner  
 Mr. and Mrs. Thomas L. Hodgson  
 Ms. Virginia P. Hogan  
 Mr. and Mrs. Michael J. Hojnowski  
 Mr. and Mrs. Ernest M. Holdaway  
 Mr. Charles M. Hubbard  
 Mr. and Mrs. Thomas E. Hunkele, Jr.  
 Mr. and Mrs. John B. Hutchinson  
 Dr. Caroline Goode Jackson  
 Dr. and Mrs. Allix B. James  
 Mrs. Judith P. Jamieson  
 Mrs. L. Howard Jenkins, Jr.  
 Mr. J. A. Jennings, III  
 Mr. and Mrs. Michael R. Jennings  
 Mr. and Mrs. Kurt L. Johnson  
 Mrs. Anna G. Jones

Mr. and Mrs. W. O. Jones, III  
 Ms. Gilda P. Jordan  
 Lt. Governor and Mrs. Timothy M. Kaine  
 Mr. and Mrs. Nicholas W. Kappel  
 Mr. Lewis Kelley  
 Mr. and Mrs. Randolph C. Kendall  
 Mrs. Sadie L. Kennedy  
 Mr. and Mrs. Thomas J. Kielty  
 Dr. Karsten F. Konerding  
 Mr. Claude S. Lampie  
 Mr. and Mrs. Tony R. Landis  
 Mr. and Mrs. Robert C. Lauchner  
 Mr. and Mrs. W. F. LaVecchia  
 Mr. and Mrs. Alfred B. Lawrence  
 Mr. Larnell Lawrence  
 Dr. and Mrs. Walter Lawrence, Jr.  
 Mr. Fontaine B. Lawson  
 Mr. and Mrs. Larry D. Lee  
 Mr. and Mrs. Jerome N. Levine  
 Mrs. Caroline Y. Lindemann  
 Ms. Dorothy W. Lindley  
 Dr. Verda L. Little  
 Ms. Carole F. Long  
 Ms. Lorraine P. Loth  
 Mr. E. Jeffreys Love  
 Mr. and Mrs. James C. Lovell  
 Mr. and Mrs. Michael W. Lowry  
 Mr. and Mrs. William J. Lyon  
 Mr. Earle L. MacKay  
 Mrs. Ruth C. MacMillan  
 Mrs. Marian G. Mahon  
 Mr. H. W. Marshall, Jr.  
 Mr. Watson M. Marshall  
 Mr. and Mrs. William J. Martin  
 Ms. Janet Masters  
 Mr. and Mrs. William B. May, Jr.  
 Mr. and Mrs. Allen G. McCabe, Jr.  
 Mr. and Mrs. Stephen D. McCall  
 Ms. Helen S. McCallum  
 Mrs. Martha I. McCormick  
 Mr. and Mrs. John D. McDaniel  
 Mrs. Cecelia C. McEntee  
 Mrs. Veron J. Meador  
 Mr. and Mrs. Albert M. Mehfood  
 Mr. and Mrs. Russell A. Menefield  
 Ms. Linda L. Michel  
 Mr. and Mrs. Kenneth R. Mick  
 Ms. Martha E. Mitchell  
 Mr. and Mrs. John B. Montoro  
 Mr. and Mrs. William F. Moody  
 Mrs. Betty R. Mooney  
 Dr. and Mrs. Robert P. Moore  
 Mr. and Mrs. Robert P. Morris  
 Mr. Robert R. Morrisette  
 Mr. and Mrs. Lawrence S. Morrow  
 Mr. Richard B. Mottley, Jr.  
 Ms. Cheryl Mounce  
 Mr. James L. Mounce  
 Mr. and Mrs. David L. Mueller  
 Mr. B. B. Munford, III  
 Mr. and Mrs. William N. Murphy  
 Mr. and Mrs. Robert L. Musick, Jr.  
 Mr. Charles A. Nauman  
 Mr. and Mrs. Richard Nelson  
 Ms. Linda S. Nester  
 Mr. T. A. Newby  
 Mrs. Cheryl M. Niece  
 Mr. Raymond B. Norton, Jr.  
 Mr. and Mrs. Paul E. Nylander  
 Mr. Herbert Oliver  
 Mr. and Mrs. Wayne Oplinger  
 Mr. J. W. Ostergren  
 Mrs. Mary A. Pannill  
 Dr. and Mrs. Mark S. Parker  
 Mr. and Mrs. Vivian A. Parks, Jr.  
 Mr. Giacomo Pastore and  
 Ms. Alice D. Young  
 Ms. Pat B. Pearman  
 Mr. and Mrs. John W. Pearsall  
 Mrs. Mildred G. Peay  
 Mr. and Mrs. Bryan F. Peery  
 Ms. Patricia Peregoy  
 Mr. and Mrs. John Philips  
 Mr. and Mrs. Gilbert H. Piercy  
 Mr. and Mrs. A. Wayne Pinchefskey  
 Mr. and Mrs. C. Cotesworth Pinckney  
 Ms. Annie E. Plaster  
 Mrs. Hattie W. Powell  
 Ms. Gwynn C. Prideaux  
 Ms. Elva B. Puckett  
 Ms. Frances V. Rawlings  
 Ms. Marie F. Reel  
 Mr. and Mrs. James A. Remington  
 Mr. Robert G. Rhodes  
 Ms. Louise C. Richards  
 Dr. and Mrs. David W. Richardson  
 Mr. Selden Richardson  
 Mr. D. R. Riddle  
 Mr. and Mrs. Charles E. Riedel  
 Dr. Louise W. Robertson  
 Ms. Gladys P. Robinson

Mr. and Mrs. Abraham L. Rosenzweig  
 Ms. Gertude M. Ross  
 Mrs. Mary K. Rotert  
 Mr. and Mrs. Maurice B. Rowe, III  
 Mr. Rodney Sager  
 Ms. Jean C. Salley  
 Miss Julia G. Salmon  
 Ms. Linda D. Schmidt  
 Mr. William R. Schmidt  
 Mr. and Mrs. Reed Schweickert  
 Dr. Irvin J. Seeman and  
 Dr. Linda K. Seeman  
 Mr. Barry L. Seigworth  
 Mr. and Mrs. Dana E. Selley  
 Mrs. Mary T. Seume  
 Ms. Vickie M. Seymour  
 Mr. and Mrs. James R. Sharp  
 Ms. Virginia H. Shearon  
 Ms. Susan Sheppard  
 Ms. Angela S. Shiel  
 Mr. and Mrs. Pleasant C. Shields  
 Mr. and Mrs. William F. Shumadine, III  
 Mr. and Mrs. William F. Shumadine, Jr.  
 Mr. John A. Sibley, Jr.  
 Mr. and Mrs. Robert C. Sieben  
 Ms. Jennifer J. Sieck  
 Mr. and Mrs. John C. Siewers, II  
 Mrs. Virginia S. Skinner  
 Mr. and Mrs. Hunter C. Sledd, Jr.  
 Dr. Katherine L. Smallwood  
 Ms. Alice A. Smith  
 Mr. and Mrs. Ronald T. Smith  
 Ms. June B. Smyth  
 Mr. James Snipes  
 Ms. Joyce R. Soghoian  
 Mr. and Mrs. John W. Spencer  
 Mr. and Mrs. Larry E. Spurzem  
 Mr. David Stanley  
 Mr. A. P. Staples  
 Mr. Richard A. Stauffer and  
 Ms. Holly J. Hudson  
 Ms. Cordelia S. Steinacker  
 Ms. Susan R. Stevick  
 Mr. James C. Stewart and  
 Ms. Hazel W. Stewart  
 Mrs. Helen R. Stone  
 Mr. and Mrs. Richard E. Strauss  
 Mr. J. Phillip Stubbs  
 Mr. and Mrs. Robert G. Sullivan  
 Mr. George O. Summers  
 Mr. and Mrs. C. Wayne Taylor  
 Mr. Cary L. Taylor and  
 Ms. Lena Sanyour  
 Mr. and Mrs. James E. Taylor  
 Telecom Pioneers  
 Ms. Sara Lee Thacker  
 Mr. and Mrs. John R. Thomas  
 Ms. Mary A. Thomas  
 Mr. and Mrs. William H. Thompson  
 Mr. R. G. Throckmorton  
 Ms. Dot Tibbs  
 Mr. and Mrs. Richard G. Tilghman  
 Ms. Ruth Timmons  
 Dr. and Mrs. Julian P. Todd, Jr.  
 Ms. Sally L. Todd  
 Mr. Vance Townes  
 Dr. J. Ives Townsend  
 Mr. and Mrs. Charles H. Tracy  
 Mr. and Mrs. L. James Tromater  
 Mr. and Mrs. John M. Tsou  
 Mr. and Mrs. Malcolm Turnbull  
 Mr. and Mrs. Raymond E. Turner  
 Mr. A. R. Turpin, Jr.  
 Ms. Ann M. Twiggs  
 Mrs. Louise W. Tylor  
 Mr. Charles D. Tysor  
 Mrs. Dorothy W. Van Vleck  
 Ms. Shirley S. Vedomske  
 Mr. and Mrs. Anthony Ventura  
 Mr. Willie B. Via  
 Mr. and Mrs. Geoffrey W. Viol  
 Mr. and Mrs. Donald G. Vorhis  
 Ed Vranian  
 Mr. and Mrs. Lynwood C. Wade  
 Mr. and Mrs. James L. Walker, Jr.  
 Mrs. Helen Wallace  
 Mr. and Mrs. William M. Wallace  
 Ms. Joann Weissbart  
 Dr. Steven J. Welton  
 Mrs. Reba W. Wetherbee  
 Mrs. and Mrs. Paul R. White  
 Miss Virginia L. White  
 Mr. and Mrs. Rick Whittaker  
 Mr. Daniel R. Wickinson, Jr.  
 Mr. and Mrs. David E. Will  
 Mr. and Mrs. Michael Williams  
 Ms. Frances H. Williams  
 Mr. and Mrs. S. Bruce Williams  
 Mr. and Mrs. Clayton E. Willis, Jr.  
 Mr. and Mrs. Charles H. Wilson, Jr.  
 Mr. Irvine T. Wilson

Mr. and Mrs. James J. Wilson  
 Mrs. Hallie V. Wingo  
 Mr. and Mrs. E. Paul Winslow  
 Ms. Eleanor V. Wolfe  
 Ms. Phyllis T. Wonders  
 Ms. Laura Woody  
 Ms. Georgia G. Wooten  
 Mr. and Mrs. David W. Wright  
 Mr. Lewis V. Wyland  
 Mr. and Mrs. Kenneth J. Wynne  
 Mr. and Mrs. Lizen Yang  
 Mrs. Ada L. Yarbrough  
 Mr. and Mrs. David C. Yaworsky  
 Dr. and Mrs. Peter A. Zedler

**ORGANIZATIONAL ANNUAL FUND DONORS****\$500,000 +**

United Way Services Serving Richmond and Petersburg

**\$100,000 +**

Massey Foundation

**\$50,000 +**

Philip Morris Employee Community Fund

Philip Morris USA

Richard S. Reynolds Foundation

**\$25,000 +**

Alcoa Foundation

**\$10,000 +**

BB&T

Capital One Services, Inc.

Commonwealth of Virginia Campaign

The Community Foundation serving

Richmond and Central Virginia

Hanover County

Hindu Center of Virginia

Luck Stone Corporation

Mary Wellford Bowers Foundation

**\$7,500 +**

Bank of America United Way Campaign

**\$5,000 +**

Fidelity Charitable Gift Fund

The Gottwald Foundation

Newgen

Philip Morris Employee

Matching Gifts Program

Selective Insurance

Universal Leaf Tobacco Company, Inc.

Windsor Foundation

**\$2,500 +**

The Bullard Family Foundation

Cornett Hospitality

The Franklin Federal Foundation

LandAmerica Foundation

Owens & Minor, Inc.

The Pepsi Bottling Group, Inc.

Performance Food Group

The William G. Reynolds, Jr. Charitable

Foundation

Richmond Jewish Foundation

Robins Foundation

Kathryn and W. Harry Schwarzschild

Fund

St. Peter Baptist Church

Stock Building Supply

SUPERVALU Eastern Region

Swedish Match North America, Inc.

Charles G. Thalheimer & Family

Foundation

The Andersen Insurance Agency Group

Ukrop's Super Markets, Inc.

Wachovia Wealth Management

Wawa, Inc. Charity Account

**\$1,000 +**

Abner Baptist Church

Alstom Power, Inc.

Amelia Presbyterian Church

Bank of America Matching Gifts

Program

Burford-Limenstoll Foundation, Inc.

Cargill Incorporated

Castle Equipment Corporation

Chemtreat, Inc.

Chesterfield Auto Parts

Colonial Webb Contractors

Costen Floors, Inc.

Creative Office Environments

Management Services, Inc.

Dallan Construction, Inc.

Deloitte & Touche LLP

Dominion Resources Services, Inc.

East Bay Community Foundation

Elks Richmond Lodge #45

Fairfax Residency Golf Tournament

First Market Bank

First Union Baptist Church

Food Lion, LLC

Franklin Federal Savings and Loan

Glen Allen Foundation



## JULY 1, 2004 - JUNE 30, 2005 DONORS

Greater Richmond Church of Christ  
Hirschler Fleischer  
IBM Corporation,  
Matching Grants Program  
LandAmerica Foundation -  
Matching Gifts  
Leigh Street Baptist Church  
Lingerfelt Family Foundation  
The Linhart Foundation  
Markel Corporation  
Matoaca Middle School  
RSM McGladrey, Inc.  
McGuireWoods LLP  
Molins Richmond, Inc.  
Morning Star Baptist Church  
Mt. Olive Baptist Church  
New York Life Investment Management  
Norfolk Banana Distributors  
Pratt Industries  
Richmond International Raceway  
Rostro Foundation  
Sands, Anderson, Marks & Miller, PC  
The C.F. Sauer Company  
Second Baptist Church  
Second Baptist Church  
Sharon Baptist Church  
Morton G. and Nancy P. Thalheimer  
Foundation  
William B. Thalheimer, Jr. &  
Family Foundation  
Vaysman Consulting Inc.  
Virginia Sargeant Reynolds Foundation  
The W.M.Y. Fund  
M. H. West & Co., Inc.  
West Richmond Rotary Club  
Supporter - (\$500.00 + )  
Acoustical Solutions, Inc.  
Additional Construction  
Alliant Energy Foundation  
Matching Gifts Company  
Ashland Lodge No. 2099  
Bank of America Matching Gifts  
Baskerville  
Buyers 1st Realty, Inc.  
C. Kenneth & Diane Wright Foundation  
Carmel United Methodist Church  
Colonial Mechanical  
Cox Radio - Richmond  
Diamond Springs Water, Inc.  
Ditch Witch of Virginia  
Dominion Resources, Inc. -  
Matching Gifts  
Dominion Virginia Power North Anna  
Employee Volunteer Team  
Elco Concrete Company  
Fine Metals Corp.  
First African Baptist Church  
First Bethel Baptist Church  
Franklin Street Marketing & Advertising  
Friedman Realty of Virginia, LLC  
Graybeale Construction Inc.  
Hatcher Memorial Baptist Church  
Highland Springs Church of Christ  
Hourigan Construction Corporation  
Impact Media  
Imperial Plaza Bible Group  
Jefferson-Pilot Foundation  
Jewell Smokeless Coal Corporation  
Kanawha Land Company, LC  
Kelleher Heating & Cooling  
Kiwanis Club of Tuckahoe  
Kjellstrom & Lee, Inc.  
Merck Partnership for Giving  
Midlothian Ruritan Club  
Mt. Pero Baptist Church  
Mulch & More  
National Baptist Deacons Convention  
Piascik & Associates  
Richmond Restaurant Service  
Snipes Enterprise  
St. John Baptist Church  
Trinity Christian Church  
United Way of Tri-State  
Virginia Credit Union, Inc.  
Wal-Mart Foundation  
West Richmond Church of the Brethren  
Whitley Roofing & Sheet Metal  
Company  
Whitlow Chevrolet  
Williams Construction Company

**\$250 +**  
Advisor Charitable Gift Fund  
Allstate Giving Campaign  
American Endowment Foundation  
Anderson and Associates, Inc.  
Anthem Southeast Employees'  
Association, Inc.

Auxiliary of the Deacons Conference of  
Richmond & Vicinity  
BDH Foundation  
Bensley Bermuda Volunteer Rescue  
Squad, Inc.  
Bethesda Full Gospel Baptist Church  
Beulah United Methodist Church  
Boy Scout Troop No. 710  
Brown Grove Baptist Church  
Diservio & Sobrito Insurance  
Agency, Inc.  
First Baptist Church  
Flower Hill Baptist Church Missionary  
Hourigan Construction Corp.  
KPMG Community Involve Campaign  
Monacan High School  
Moore Street Baptist Church  
Pilgrim Journey Baptist Church  
Richmond Chamberlayne Chapter  
A.A.R.P. #390  
Sandston American Legion  
The Bank of Richmond  
The Brink's Company  
The Irving and Edith Hood May  
Foundation  
Tomahawk Ruritan Club  
Tuckahoe Presbyterian Church  
United Way of Hopewell  
United Way Thomas Jefferson Area  
VIP Inn  
VML Insurance Programs  
Wellpoint Associate Giving Campaign

**NATIONAL DISASTER  
DONORS INCLUDING FALL  
2004 HURRICANES**

**\$25,000 +**  
Elis Olsson Memorial Foundation  
Philip Morris Employee Community  
Fund  
Philip Morris USA

**\$10,000 +**  
Mr. and Mrs. J. Harwood Cochrane  
Dominion Resources Services, Inc.  
West Broad Honda Audi  
The Adele A. & Harold J. Westbrook  
Foundation, Inc

**\$7,500 +**  
The Community Foundation serving  
Richmond and Central Virginia

**\$5,000 +**  
The Franklin Federal Foundation  
The Eric & Jeanette Lipman Foundation  
The Rae Foundation  
The Titmus Foundation  
Leader - (\$2,500.00 + )  
Brown Grove Baptist Church  
Franklin Federal Savings and Loan  
Northminster Baptist Church  
Dr. and Mrs. Terry L. Whipple

**\$1,000 +**  
Anonymous  
Adams Marketing Associates, Inc.  
Anonymous  
Mr. and Mrs. Alan J. Anthony  
Construction Management Solutions, Inc.  
Ms. Teresa W. Daughtry  
Mr. and Mrs. Mark S. Dray  
Dr. and Mrs. William F. Falls, Jr.  
Fidelity Charitable Gift Fund  
Mr. Faryl K. Hart  
Mr. and Mrs. Gordon W. Hays  
Ms. Diane M. Hazelwood  
Herndon Foundation  
Mr. W. Reed Johnson  
Ms. Gloria B. Jones  
Mr. and Mrs. Ben B. LeCompte, Jr.  
Ms. Marguerite D. MacNelly  
Mr. and Mrs. James A. Mohs  
Mrs. Frederica C. Mullen-Fenn  
Paul F. Fantl, P.C.  
Mr. Brian K. Perry  
Ms. Cornelia Perry  
Mr. Edward H. Phillips  
Mr. Owen N. Pollard, Jr.  
Ms. Mary Ann C. Ramage  
Mrs. Genevieve C. Saunders  
Kathryn and W. Harry Schwarzschild  
Fund  
Second Baptist Church  
Southern VA Chapter of Thrivent  
Financial for Lutherans  
St. James Baptist Church  
Mr. Ernest W. Staudenmayer  
Charles G. Thalheimer & Family  
Foundation  
Mr. and Mrs. Richard W. Wiltshire  
Mr. Frank J. Wyatt

**\$500 +**  
Mr. and Mrs. William C. Ager  
Ms. Molly E. Archibeque  
Mr. and Mrs. Michael F. Archie  
Mr. and Mrs. Fred B. Bisger  
Dr. and Mrs. Robert Bluford, Jr.  
Mr. and Mrs. Harold W. Bohannon  
Ms. Cynthia H. Bolger, R.Ph.  
Mr. and Mrs. George H. Booth  
Brookland United Methodist Church  
Christ Center Gospel Fellowship  
Mrs. Elizabeth P. Christian  
Dr. and Mrs. Robert J. Cohen  
Mrs. Leroy D. Crowder  
Mr. and Mrs. Russell R. Davis  
Ms. Ethel K. Denton  
Eastern Henrico Ruritan Club  
Elko Union Church  
Ms. Lisa D. Galloway  
Mr. and Mrs. John R. Gauntt  
Mr. and Mrs. Thomas Gillie  
Ms. Nettie M. Gordon  
Great Hope Baptist Church  
Ms. Anne E. Harris  
Mr. and Mrs. James T. Hatcher, Jr.  
Highland Springs Church of Christ  
Mr. and Mrs. Adolf V. Honkala  
Hopeful Baptist Church  
Mr. Robert L. Hoyle  
Ms. Ruth D. Hubbard-Rasberry  
Mr. William G. Hueston  
Mrs. Barbara W. Jessup  
Mr. and Mrs. Irwin Kaplan  
Mr. Stephen Klein  
Mr. and Mrs. William H. Knull  
Mr. and Mrs. Richard M. Lee  
Lumberg, Inc.  
Ms. Evelyn C. Martin  
Midlothian Ruritan Club  
Mr. and Mrs. Robert D. Morris  
Mr. and Mrs. John R. Mothershead  
Mr. and Mrs. Harry F. Mountcastle  
Mt. Pero Baptist Church  
Ms. Edna H. Musser  
Ms. Joyce Parkerson  
Mr. and Mrs. David C. Paulette  
Mr. and Mrs. John C. Priddy  
Col. and Mrs. Donald A. Ramsay  
Richmond Jewish Foundation  
Ms. Diana Sage  
Ms. Pam K. Saylor  
Ms. Beverly D. Schill  
Mrs. Ethel V. Shellenberg  
Mr. and Mrs. William F. Shumadine, Jr.  
Mr. and Mrs. John S. Smart  
Ms. Margaret Vaden  
Mr. and Mrs. William L. Van Arnam, III  
Mr. William F. Watkins, Jr.  
Mrs. and Mrs. Paul R. White  
Ms. Eugenia K. Williams  
Judge and Mrs. Richard L. Williams  
Ms. Jean P. Wilson  
Wilton Contractors, Inc.

**INTERNATIONAL  
DISASTER FUND INCLUDING  
TSUNAMI DONORS**

**\$100,000 +**  
Philip Morris USA  
**\$25,000 +**  
Anonymous  
The Community Foundation serving  
Richmond and Cent  
First Market Bank  
Ms. Louisa Neal  
New Market Corporation  
Ukrop's Super Markets, Inc.

**\$10,000 +**  
Anonymous  
Allen, Allen, Allen & Allen  
The Captech Foundation, Inc.  
Mr. and Mrs. J. Theodore Linhart  
The Adele A. & Harold J. Westbrook  
Foundation, Inc  
**\$7,500 +**  
George H. Moody Middle School  
Saxon Mortgage, Inc.

**\$5,000 +**  
AireHokeye, Inc.  
Mr. and Mrs. J. Harwood Cochrane  
Dominion Resources, Inc. -  
Matching Gifts  
Franklin Federal Savings and Loan  
Mr. Jerry E. Gorde and  
Ms. Barbara lobst  
Mr. and Mrs. Bruce C. Gottwald  
Mr. and Mrs. Thomas E. Gottwald  
Ms. Gloria M. Hintz  
Infilco Degremont, Inc.  
Ms. Marguerite D. MacNelly  
Mr. and Mrs. John B. McCammon

Mills E. Godwin High School  
Mr. and Mrs. Peter W. Powell  
Kathryn and W. Harry Schwarzschild  
Fund  
Mr. and Mrs. Thomas G. Snead, Jr.  
Mr. and Mrs. Wallace Stettinius

**\$2,500 +**  
Adams Marketing Associates, Inc.  
Apex Systems, Inc.  
Bank of America Matching  
Gifts Program  
Mr. Robert Barnett  
CapTech Ventures, Inc.  
Club Corp Charities, Inc.  
Colonial Heights High School  
Douglas S. Freeman High School  
ET Holdings, L.C.  
Mr. Charles Gold  
GPM Investments, LLC  
HC YU and Associates  
Islamic Center of Virginia  
James River High School  
Lee Davis High School  
Mr. and Mrs. Charles S. Luck, III  
Mr. and Mrs. Eugene E. Lunger  
Media General, Inc.  
Mr. and Mrs. Alfred F. Mistr, Jr.  
Mr. Lewis H. Myers  
Mr. J. Russell Parker  
Providence Middle School  
Short Pump Middle School  
South Richmond Rotary Club  
Timmons Group  
Virginia Credit Union, Inc.

**\$1,000 +**  
Mrs. Elizabeth S. Allen  
Mr. and Mrs. Alan J. Anthony  
Associated Distributors, Inc.  
B. J. Sager, Inc.  
Mr. and Mrs. Linwood Baughan  
Mrs. H. Singleton Belt  
Mr. and Mrs. Fitzgerald Bemiss  
Bethlehem Baptist Church  
Mr. and Mrs. Timothy C. Bishop  
Blue Ridge Beverage Co., Inc.  
Mr. and Mrs. Evans B. Brasfield  
Mr. Harold L. Bryant  
Dr. and Mrs. W. E. Bundy, Jr.  
Dr. and Mrs. Ernest P. Buxton, Jr.  
C. C. Wells Elementary School  
Calvary Baptist Church  
Capital Interior Contractors  
CarMax Corporation  
Central Virginia Bank  
Chesbay Distributing Co., Inc.  
Chickahominy Middle School  
Clark Springs School  
Ms. Martha B. Cook  
Mr. and Mrs. Roger J. Cronin  
Ms. Kim L. Davis  
Ms. Anne P. Delaiglesia  
Mr. and Mrs. William C. Derusha  
Mr. Digant Dhru  
Dixie Beverage Co.  
Mr. and Mrs. Mark S. Dray  
Eastern Henrico Ruritan Club  
Mr. and Mrs. George P. Emerson, Jr.  
Evergreen Elementary School  
Mr. and Mrs. Thomas F. Farrell  
Mrs. Virginia C. Finlayson  
First Baptist Church  
Fort Lee Baptist Church  
Mr. and Mrs. Donald Franklin  
The Franklin Federal Foundation  
Fredericksburg Distributing Co.  
Mr. and Mrs. James M. Frye  
Mr. and Mrs. Ronnie D. Gaines  
Mr. and Mrs. Richard L. Gary  
General Services Corporation  
Mr. and Mrs. Thomas Gillie  
Glen Allen Elementary School  
Dr. and Mrs. William M. Gottwald  
The Gottwald Foundation  
Great Hope Baptist Church  
Mr. and Mrs. S. T. Grigg, Jr.  
Guiffre' Distributing Co.  
Mrs. Alberta Hawthorne  
Mr. and Mrs. Arthur W. Helwig  
Herndon Foundation  
Ms. Jacqueline F. Herod  
Hoffman Beverage Co.  
Ms. B. Paige Estep Holloway  
Mr. and Mrs. Lowrey H. Holthaus  
Hopeful Baptist Church  
Hunton & Williams LLP  
InterActive Financial  
Marketing Group, LLC  
IQRA Academy of Virginia  
J. F. Fick, Inc.  
J. W. Sieg & Co., Inc.  
John Randolph Tucker High School



## JULY 1, 2004 - JUNE 30, 2005 DONORS

Colonel and Mrs. Leo D. Johns  
Mr. and Mrs. Thad A. Jones  
Ms. Retta L. Keil  
Mr. and Mrs. Douglas Kittle  
Kozak Beverages, Inc.  
Ms. Mary Jo Krueger  
L.E. Lichford, Inc.  
Mr. Godfrey E. Lake, Jr.  
LandAmerica Foundation -  
Matching Gifts  
Liberty Middle School  
Loveland Distributing Co., Inc.  
Lumberg, Inc.  
M. J. & N. Enterprises LLP  
M. Price Distributing Co.  
Mr. David M. Marchand  
Mary Munford School  
Mass Mutual Matching Gift Center  
Matoaca Middle School  
Mattaponi Indian Church  
Mr. and Mrs. Eugene W. McCaul  
McDonald's Matching Gifts Program  
Mechanicsville Elementary School  
Dr. Wilson C. Merchant, III  
Midlothian High School  
Mr. and Mrs. Thomas M. Millhiser  
Mohenis Services  
Montrose Elementary School  
Mrs. Ethel Morgan  
Morning Star Baptist Church  
Mr. and Mrs. Scott L. Morrison  
Mt. Olive Baptist Church  
Mt. Zion Baptist Church  
N.B. Clements Junior High School  
National Distributing Co.  
Ms. Jane Nelson  
Ms. Kirsten A. Nelson  
Newport Christian Church  
Mr. David B. Nichols  
Ms. Jeanne E. O'Grady  
Pakistan American Society  
of Central Virginia  
Mr. and Mrs. Milton N. Parma  
Mr. E. Kime Pastel  
Mr. Amratlal R. Patel  
Mr. William B. Paulson  
Pecht Distributors, Inc.  
Philip Morris Employee  
Matching Gifts Program  
Ms. Mary A. Pikrone  
Plan 9 Music  
Mr. Owen N. Pollard, Jr.  
Poplar Mount Baptist Church  
Poplar Springs Hospital  
Premium Distributors of VA, Inc.  
Presbyterian Women of Providence  
Church of Gum Spr  
Mr. and Mrs. Douglas B. Pulsifer  
Mr. Chau Quach  
Mr. Kim Hon Quach  
Richmond Nawbo Foundation  
Mr. and Mrs. Mark Rickey  
Mr. and Mrs. D. B. Rider  
Mr. and Mrs. Matthew M. Riley  
Dr. and Mrs. Richard F. Rinehardt  
Rising Mt. Zion Baptist Church  
Riverview Elementary/Middle School  
Mr. and Mrs. Walter S. Robertson, Jr.  
Mr. Hubel Robins, Jr.  
Mr. Graham D. Rollings, Sr.  
Mr. and Mrs. Philip B. Scott  
Second Mt. Zion Baptist Church  
Service Distributing, Inc.  
Mr. and Mrs. George E. Shaheen  
Mrs. Ethel V. Shellenberg  
Mr. and Mrs. R. Marshall Shelton  
Mr. Philp A. Short  
Ms. Linda C. Southworth  
Springfield Park Elementary School  
St. Gertrude High School  
St. John Baptist Church  
St. John Baptist Church  
St. John's United Holy Church  
St. Martin's Episcopal Church  
Mr. Ernest W. Staudenmayer  
The Steward School  
The Jerusalem Connection  
Thompson & McMullan, PC  
Ms. Nalda S. Thung  
Tri Cities Beverage Corporation  
Tuckahoe Elementary School  
Tuckahoe Middle School  
United Baptist Church  
Mr. E. Massie Valentine  
Virginia Air Distributors, Inc.  
Virginia Imports, Ltd.  
Virginians for Jerry Kilgore

Mr. David S. Walker, Jr.  
Ms. Phoebe M. Wallace  
Walling Distributing Company, Inc.  
Mr. John W. Welch, II  
Ms. Louise E. Wells  
Mr. John S. West  
Ms. Joanne M. Wight  
Mr. and Mrs. Daniel R. Wilkinson, Jr.  
William Fox Elementary School  
Mr. Jerome L. Williams  
Mr. and Mrs. Clayton E. Willis, Jr.  
Mr. and Mrs. Richard W. Wiltshire  
Mr. Bruce Winn  
World Access  
Mr. Ekins A. Worrell, Sr.  
Mr. John Zeltner  
**\$500 +**  
AGA Richmond Chapter  
Mr. M. Masood Ahmad  
Alberta Smith Elementary School  
Altadis U.S.A.  
Amazing Grace World Fellowship  
Aragon Group  
Mr. and Mrs. Michael F. Archie  
Ms. Samina Asif  
Mr. Frank B. Atkinson  
Dr. Ann G. Auletta  
Mr. and Mrs. Walter C. Ayers, Sr.  
Bailey Bridge Middle School  
Mrs. Sandra D. Baker  
Mr. and Mrs. Martin J. Barbie, Jr.  
Mr. and Mrs. Kevin C. Beale  
Mr. Mohammed H. Beyad  
Mr. and Mrs. Raymond H. Boone  
Brick Oven Bistro  
Bristol-Meyers Squibb Foundation  
Matching Gifts  
Mr. and Mrs. David M. Britten  
Mr. and Mrs. Rodney D. Brown  
Mr. and Mrs. L. B. Buchanan  
Dr. and Mrs. John F. Butterworth  
Mr. and Mrs. Robert W. Cabaniss, Jr.  
Mr. and Mrs. James E. Cain  
Ms. V. Claire Carlton  
Ms. Brenda M. Carmichael  
Chenault Lumber, Inc.  
Ms. Martha B. Chisholm  
Mr. Dixon W. Christian  
Clover Hill High School  
Ms. Louise Coldwell  
Mr. and Mrs. Louis C. Collier  
Mr. and Ms. Douglas E. Cook  
Ms. Verna D. Cook  
Cooper Industries Matching Gifts  
Mr. James H. Cottrell, Jr. and Ms.  
Melissa R. Phillips  
Mr. and Mrs. Thomas E. Coulbourn  
Mrs. Leroy D. Crowder  
Mr. Robert L. Curley  
Mr. Paul F. Daniels  
David Word Automotive, Inc.  
Mr. John M. Davis  
Ms. Dorothy S. Dayton  
Dearing Beverage Co., Inc.  
Defense Supply Center Richmond  
Mr. Kenneth Delhagen  
Mr. Mark T. Devlin  
Mr. and Mrs. Richard H. Dilworth  
Mr. Warren L. Domenick  
Mr. and Mrs. S. Paul Drudge  
East Bay Community Foundation  
Mr. Steven M. Edmonds  
Emmaus Baptist Church  
Ettrick Elementary School  
Mr. and Mrs. Frank T. Evans  
Mr. and Mrs. James M. Fitzgerald  
Ms. Anne M. Fontaine  
Dr. and Mrs. C. S. Fralin  
Mr. Fred A. Frye  
Mr. Terry Fulbright  
Mr. and Mrs. James M. Garnett  
Captain John H. Garrett, Jr.  
George Wythe High School  
Mr. and Mrs. Arthur L. Gergoudis  
Mr. and Mrs. Joseph F. Gigliotti  
Mr. and Mrs. William R. Gilbert  
Mr. and Mrs. William M. Ginther  
Ms. Brenda Golden  
Mr. George O. Gregory  
Ms. Linda G. Gueringer  
Mr. Frank W. Hardy  
Mrs. Terrell L. Harrigan  
Mr. R. W. Harris  
Mr. Oscar H. Harriss  
Harry F. Byrd Middle School  
Ms. Lucy M. Harvie

Mr. William L. Harvie  
Mr. and Mrs. James T. Hatcher, Jr.  
Ms. Diana Haver  
Mr. and Mrs. Gilbert F. Hayes  
Henderson Middle School  
Ms. Peggy Hicks-Wiles  
High Rock Baptist Church  
Highland Springs High School  
Dr. and Mrs. Joseph C. Hillier  
Mrs. Judy L. Holmes  
Ms. Priscilla F. Horton  
Mr. and Mrs. Brian R. Houston  
Mr. C. S. Huang  
Ms. Holly J. Hudson  
J.E.B. Stuart Elementary School  
James River Grounds Management, Inc.  
Jaria Foundation  
Mr. and Mrs. Peyton G. Jefferson, Jr.  
Jerusalem Baptist Church  
Jerusalem Baptist Church  
John Marshall High School  
Ms. Doris H. Jones  
Mr. and Mrs. William H. Jones, Jr.  
Mr. and Mrs. Ira J. Kail  
Mr. Kenneth R. Kay  
Mr. and Mrs. J. Michael Kelleher  
Ms. Sandra Kerr  
Mrs. Carolyn B. Kirk  
Ms. Margaret H. Knox  
Mr. and Mrs. Richard M. Lee  
Mr. and Mrs. H. Jack Lissenden  
Mr. and Mrs. Crowell Little, Jr.  
Lunenburg-Nottoway Educational  
Foundation  
Ms. Dorothy Lush  
Manchester Middle School  
Mr. and Mrs. Harold S. Mangin  
Mr. and Mrs. Thomas E. Marlow, III  
Mr. and Mrs. Walter A. Marston, Jr.  
Dr. and Mrs. Dennis W. Matt  
Mr. and Mrs. Michael W. Matthews  
Mr. Michael D. McCarthy  
Mr. C. W. McClung  
Ms. Patricia McClung  
Mr. and Mrs. Benjamin D. McKeel  
Mr. Everett G. McLaren, Ed.D.  
Mr. and Mrs. William C. Means  
Millwood School  
Ms. Sandra H. Mincz  
Mr. Steven R. Mohlie  
Ms. Elise B. Moore  
Mr. and Mrs. Patrick O. Mulligan  
Ms. Kristen L. Napier  
New Elam Missionary Circle  
Mr. and Mrs. Ian Orensky  
Ms. Marthalea T. Osburn  
Mr. and Mrs. H. M. Pasco  
Patrick Henry High School  
Pearsons Corner Elementary School  
Mr. and Mrs. Kenneth M. Perry  
Mr. Edward H. Phillips  
Mr. Raymond A. Pilkington, Jr.  
Mr. and Mrs. Raymond A. Pilkington  
Mr. and Mrs. J. G. Pinch, Jr.  
Ms. Diana L. Poland  
Ms. Lillian B. Pryor  
Mr. Ovid A. Raikes  
Mr. and Mrs. J. W. Read  
Regency Women's Club  
Ms. Clarice Reid  
Mr. and Mrs. Reinhart W. Reiss  
Ms. Margaret L. Reveley  
Mr. David W. Reynolds  
Richmond Community High School  
Richmond Free Press  
Mr. John F. Rick  
Rising Mount Zion Baptist Church  
Mr. Gilbert L. Roberts, Jr.  
Mr. and Mrs. Edward L. Rockwell  
Rohoic Elementary Schjool  
Rural Point Elementary School  
Ms. Pam K. Saylor  
Mr. and Mrs. Bernard M. Scott  
Susan Bailey and Sidney Buford Scott  
Endowment Tru  
Ms. Rose S. Seay  
Mrs. Laura S. Selley  
Seven Pines Elementary School  
Mr. Edwin A. Sheridan, IV  
Shiloh Baptist Church

Ms. Alicia R. Sloan  
Ms. Mary Catherine Slusser  
Mr. Edwin S. Snead III  
Southern Title Insurance Corp.  
Southampton Model School for  
Environmental Studen  
Springfield Christian Church  
Mr. and Mrs. James W. Stewart, III  
Mr. and Mrs. Richard E. Strauss  
Ms. Ann A. Stuckey  
Mr. Jeffrey W. Taylor  
Mr. and Mrs. John K. Taylor  
Mr. and Mrs. William B. Thalhimer, Jr.  
The Tri Club  
Mr. and Mrs. James S. Thomas  
Mr. and Mrs. John B. Thompson  
Mrs. Rogers T. Thorp  
Mr. Julius F. Tibolla  
University Of Richmond  
Mr. and Mrs. Michael A. Uzel  
Valley Distributing Corp.  
Verizon Employee Matching Gifts  
Dr. and Mrs. George W. Vetrovec  
Mr. Dennis Walsh  
Mr. and Mrs. Roy Ward  
Ms. Susan N. Wasserman  
Mr. and Mrs. Richard M. Webb  
West Richmond Rotary Club  
Mr. James H. Westerman  
Mr. Robert D. Whitehurst  
Mr. and Mrs. Joseph P. Whittle  
Mr. and Mrs. George W. Wilbur  
Mr. and Mrs. John N. Wiley  
Mr. and Mrs. Jack L. Wilkerson  
Ms. Deborah K. Williams  
Mr. David C. Wright  
Mr. and Mrs. James S. Wright  
Yoho's American Diner, Inc.  
Ms. Melissa P. Ziglar  
Zion Baptist Church

**AMERICAN RED CROSS,  
GREATER RICHMOND CHAPTER  
STAFF CONTRIBUTORS**  
*(Representing 100% Staff Participation)*

Ms. Kathleen Burke Barrett  
Ms. Amber Bickel  
Ms. Dorothy Blau  
Ms. Carmeil Booker  
Mr. Don R. Cash  
Mr. Richard Ciofani  
Ms. Suzen Collins  
Ms. Sanchita Dasgupta  
Mrs. Jeanne Edwards  
Ms. Camille Gaffney  
Mr. Fernando Gutierrez  
Mr. William A. Harrison, Jr.  
Ms. Elizabeth Henick  
Mrs. Elizabeth Y. Hodgson  
Ms. Darcy Howarth  
Mr. Carrol W. Hughes, Jr.  
Mrs. Deborah Hughes  
Mr. Paul D. Hundley  
Ms. Delores M. James  
Mrs. Deborah Judy  
Mr. C. Thomas Lowrie  
Mr. Anthony Marmora  
Mrs. Susan Moening  
Ms. Sandra D. Monroe  
Ms. Deborah K. Newton  
Ms. Karee Renee Payton  
Ms. Phonesavanh Phounsavanh  
Mrs. Michele P. Riedel  
Ms. Mattie Robinson  
Mrs. Tiffany T. Royall  
Mr. J. Richard Russell  
Ms. Tonya Salmon  
Ms. Brenda H. Smithers  
Mr. Robert Swain  
Mr. Peter Von der Lippe  
Ms. Margaret M. Webb  
Mr. and Mrs. Mark Whiting  
Ms. Kelly Williamson  
Mr. C. Andrew Wooldridge, Jr.

*We express our gratitude for the extraordinary outpouring of support from these individuals, organizations and corporations for their support of Red Cross relief.*

*We are profoundly grateful to our local media for their continued support of the Chapter.*

*Every effort has been made to ensure accuracy. We apologize for any errors and ask that they be brought to the attention of the Financial Development Department at (804) 780-2250.*